



2024

# AMBIENTE

*HOME OF CONSUMER GOODS*

[www.nurissah.co.id](http://www.nurissah.co.id)



W 60 cm D 52 cm H 68 cm

Material : Rattan  
Construction: Knock down  
Accessories : None  
Remax : -Rattan frame and  
decoration

MURISSAH



W 120 cm D 49 cm H 44 cm

Material : Rattan, fabric, foam

Construction: Assembled

Accessories : None

Remax : -Rattan frame and  
decoration  
-Permanent cushion fabric  
suede and foam filler

MURISSAH



W 66 cm D 68 cm H 79 cm

Material : Rattan  
Construction: Knock down  
Accessories : None  
Remax : -Rattan frame and  
decoration

MURRISAH



MURISSAH

W 50 cm D 47 cm H 44 cm

Material : Rattan, fabric, foam  
Construction: Assembled  
Accessories : None  
Remax : -Rattan frame and  
decoration  
-Permanen chusion fabric  
suede and foam filler



W 63 cm D 63 cm H 40 cm

Material : Rattan, fabric, foam  
Construction: Assembled  
Accessories : None  
Remax : -Rattan frame and  
decoration  
-chusion fabric suede  
and foam filler

MURISSAH

# MURISSAH



W 80 cm D 5 cm H 80 cm

Material : Rattan, fabric, foam  
Construction: Assembled  
Accessories : None  
Remax : -Rattan frame and  
decoration  
-Mirror size Dia. 30x0,5 cm



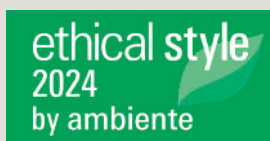
# MURISSAH

W 170 cm D 30 cm H 150 cm

Material : Rattan, fabric, foam  
Construction: Assembled  
Accessories : None  
Remax : -Rattan frame and  
decoration



# DISCOVER SUSTAINABLE FURNITURE

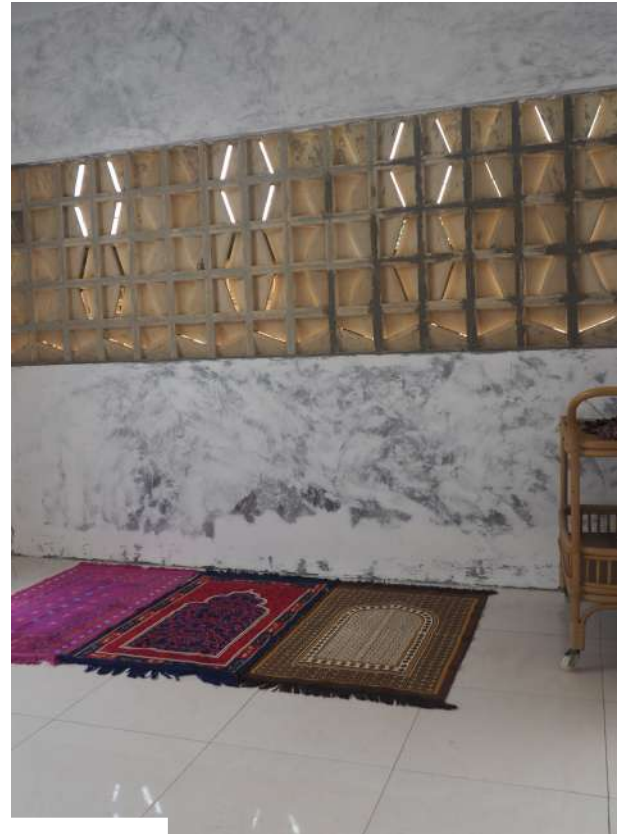


[www.nurissah.co.id](http://www.nurissah.co.id)

TOILET



MUSHOLLA



**FACILITIES**  
PUBLIC FACILITIES

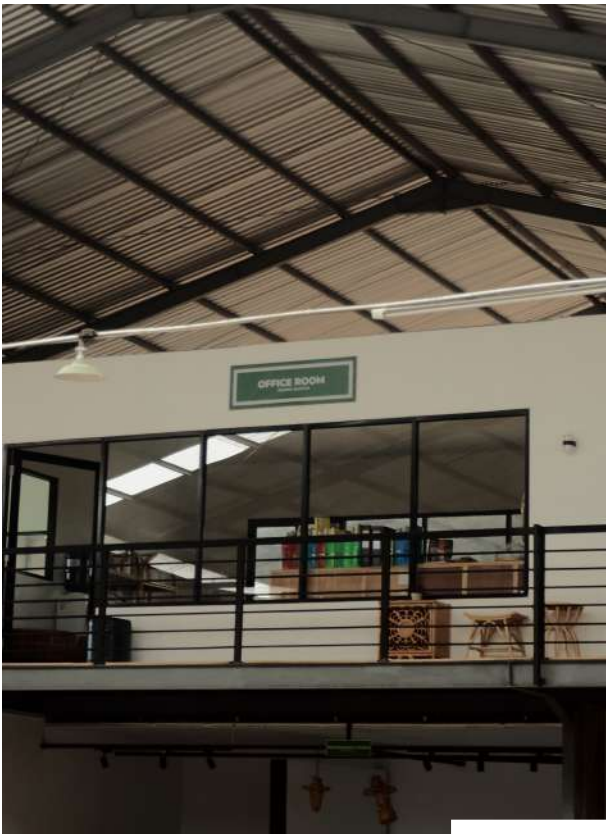


PARKING

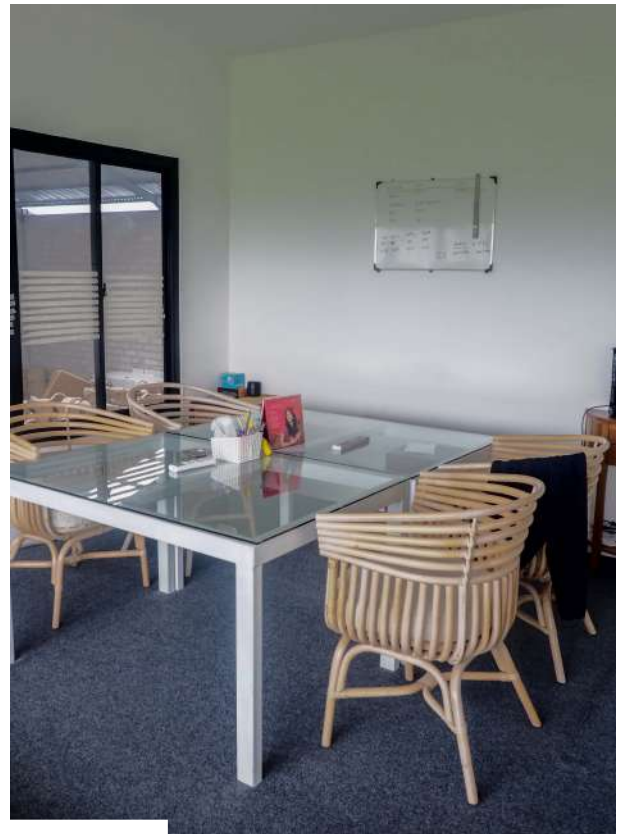


SPORTS AREA

OFFICE ROOM



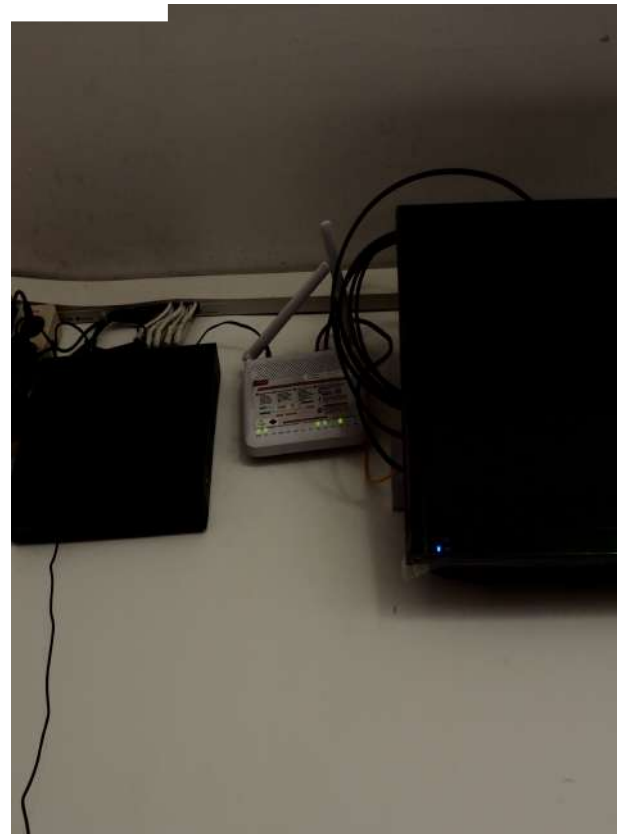
MEETING ROOM



**FACILITIES**  
PUBLIC FACILITIES



GUEST ROOM



WIFI 24 HOURS

STORAGE



INSPECT



**FACILITIES**  
WORK FACILITIES

PACKING AREA  
AREA PENGEMASAN



PACKING

FINISHING AREA  
AREA PROSES AKHIR



FINISHING

ASSEMBLING



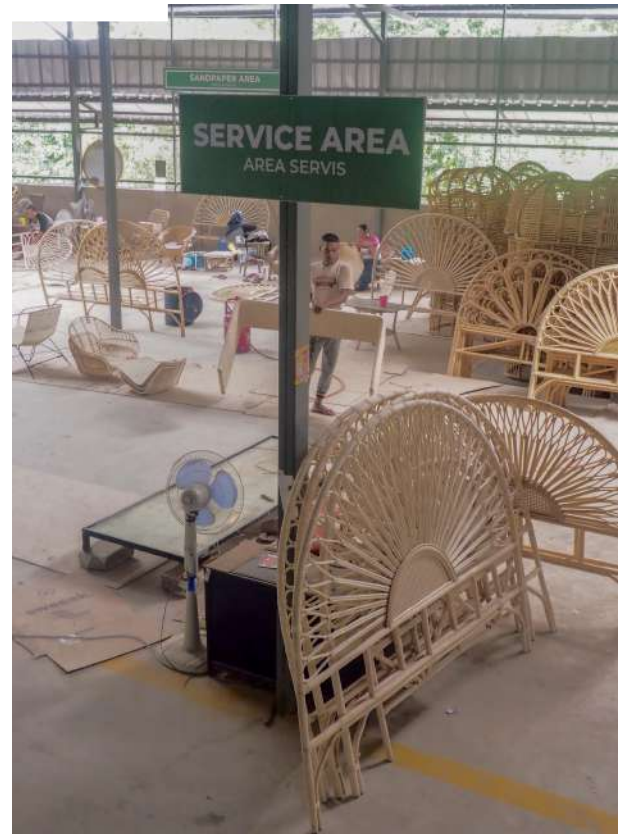
GOODS RECEIPT



**FACILITIES**  
WORK FACILITIES



SAMPLING



SERVICE

MEDICAL ROOM



PHOTO STUDIO



**FACILITIES**  
WORK FACILITIES



CHEMICAL STORAGE



QUALITY CONTROL